



BEAVER TECHNOLOGY SERVICES

STRUCTURES



EMPOWERED BY INNOVATION

TUFF-GLIDE HORIZONTAL RAIL & TROLLEY SYSTEM	3
MOBILE QUAD RAIL SYSTEM (MQRS)	4
MOBILE A-FRAME SYSTEM (MAFS)	6
FREE-STANDING HORIZONTAL RAIL SYSTEM (FSHRS)	8
FREE-STANDING SINGLE POINT ANCHOR (FSSPA)	10
FREE-STANDING MOBILE ACCESS STAIR SYSTEM (FSMASS)	12
MOBILE ACCESS STAIR SYSTEM (MASS)	14



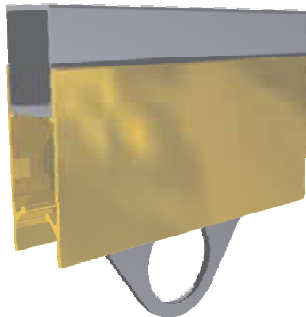
BEAVER TECHNOLOGY SERVICES

19 Bearing Road Seven Hills
NSW 2147 Australia
PO Box 672 Seven Hills NSW 1730
Phone: +61 2 8811 3500
Fax: +61 2 8811 3577
Email: sales@beavergrp.com.au
Web: www.beavergrp.com.au

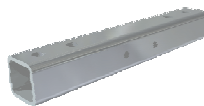
TUFF-GLIDE HORIZONTAL RAIL & TROLLEY SYSTEM



"Tuff-Glide" Horizontal Rail and Trolley system is a modular rail and trolley system designed for overhead installation to new or existing structure to providing overhead anchor points for personal fall protection.



☐ Tuff-Glide Hanger Bracket
Part# - 70062



☐ Tuff-Glide Mtg Rail Bracket
Use with 70060
Part# - 70061



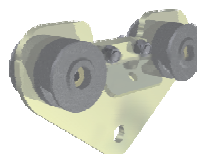
☐ Tuff-Glide Swivel Hanger
Bracket
Part# - 70060



☐ Tuff-Glide 4 Wheeled Trolley
Available in:
Mild steel CS-500 - Part# 70056
SS 304 - Part # 70052



☐ Tuff-Glide 5 Wheeled Trolley
Available in:
Mild steel CS-500 - Part# 70055
SS 304 - Part# 70051



☐ Tuff-Glide 4 Wheeled Trolley
Single anchor point
Available in:
Mild steel CS-500 - Part# 70063



MOBILE QUAD RAIL SYSTEM (MQRS)



The Mobile Quad Rail System (MQRS) allows you to place mobile overhead anchor points where you need them in your workplace. These systems slide into position over equipment or other equipment being accessed, and provide ground-up fall protection for your elevated work activities. The built in horizontal rail affords the simplicity of a rail-and-trolley system while allowing users a full range-of-motion over the work area, keeping your workers safe without interfering with their jobs.

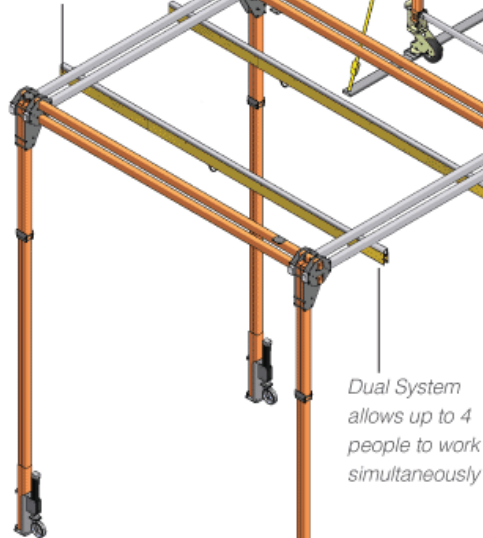


MOBILE QUAD RAIL SYSTEM (MQRS)

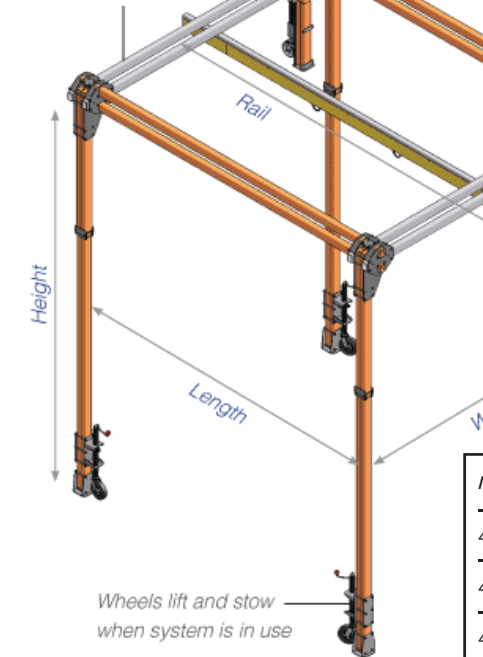
FEATURES

- Versatility**
The quad frame can be utilised over a variety of equipment, vehicles and structures.
- Mobility**
Engineered for easy transportation and mobility
- Lightweight**
Easily moved by hand

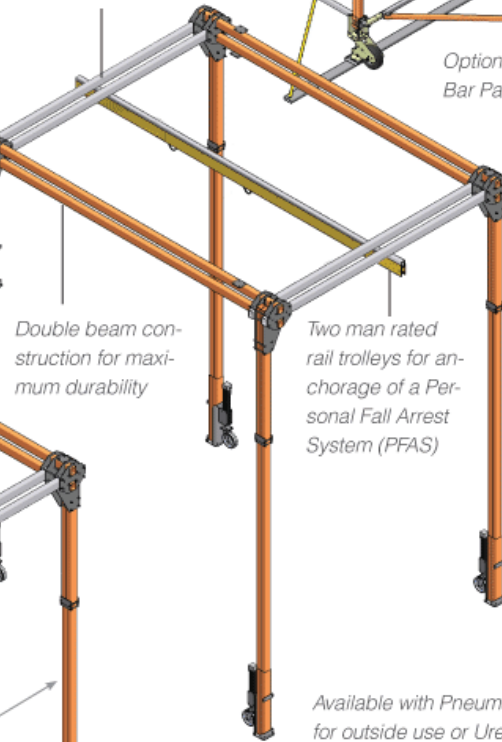
□ 4.8m Dual Rail
Part No. 70147



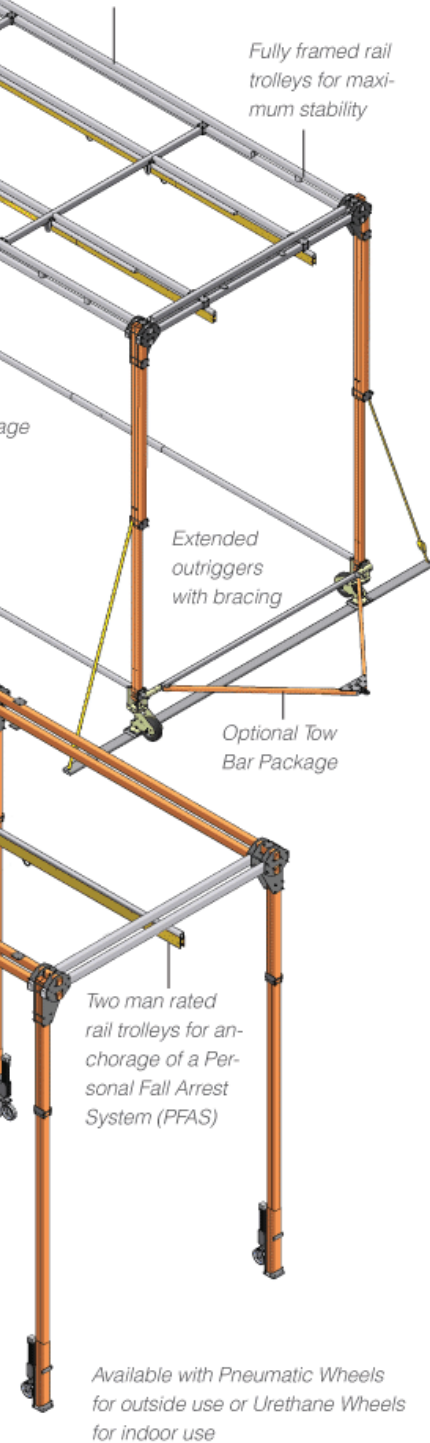
□ 4.5m Single Rail
Part No. 70145



□ 4.8m Single Rail
Part No. 70146



□ 8.2m Dual Rail
Part No. 70148



Model	Width (W)	Length (L)	Height (H)	Rail	Wheels*	Part #
4.5m Single Rail	3.65	4.75	4.87	1	U	70145
4.8m Single Rail	3.65	4.87	5.48	1	U	70146
4.8m Dual Rail	3.65	4.87	5.48	2	P	70147
8.2m Dual Rail	4.36	8.23	6.70	2	P	70148

* Custom widths and heights available

*U - Urethane P - Pneumatic



MOBILE A-FRAME SYSTEM (MAFS)



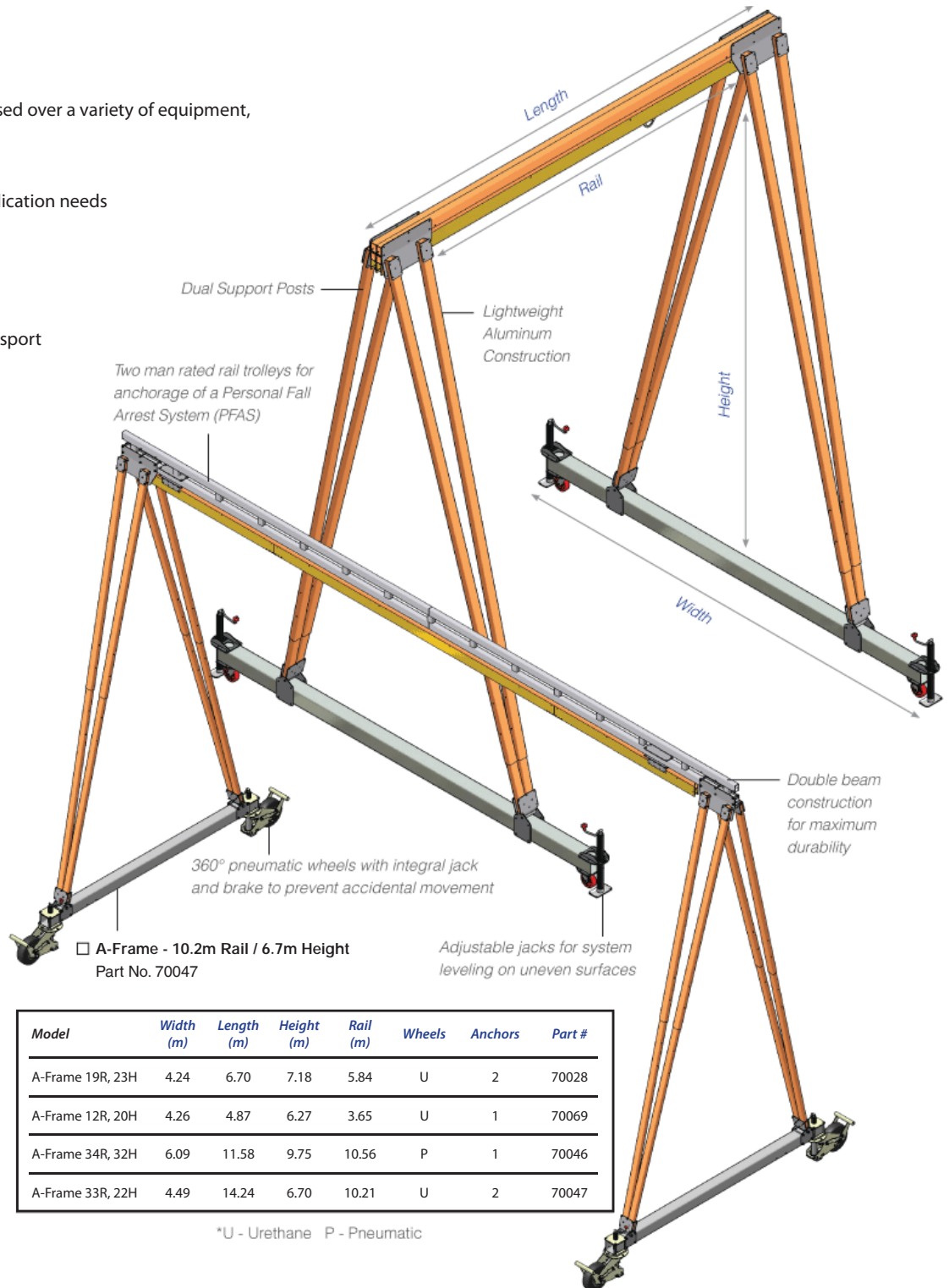
The Mobile A-Frame System (MAFS) allows you to place mobile overhead anchor points where you need them in your workplace. These systems slide into position over equipment or other structures being accessed, and provide ground-up fall protection for your elevated work activities. The built in horizontal rail affords the simplicity of a rail-and-trolley system while allowing users a full range-of-motion over the work area, keeping your workers safe without interfering with their jobs.



MOBILE A-FRAME SYSTEM (MAFS)

FEATURES

- Versatility**
 The A-frame can be utilised over a variety of equipment, vehicles and structures
- Customisable**
 To suit your specific application needs
- Lightweight**
 Easily moved by hand
- Mobility**
 Engineered for easy transport



FREE-STANDING HORIZONTAL RAIL SYSTEM (FSHRS)



The Free-Standing Horizontal Rail Systems (FSHRS) are designed to slide into position up to elevated work surfaces and provide mobile anchor points for fall protection along the length of an elevated area. Rail systems on FSHRS may be fixed height or adjustable, and can incorporate an access stair system to provide ground-up fall protection for your elevated work activities. The built in horizontal rail affords the simplicity of a rail-and-trolley system keeping your workers safe without interfering with their jobs.



FREE-STANDING HORIZONTAL RAIL SYSTEM (FSHRS)

FEATURES

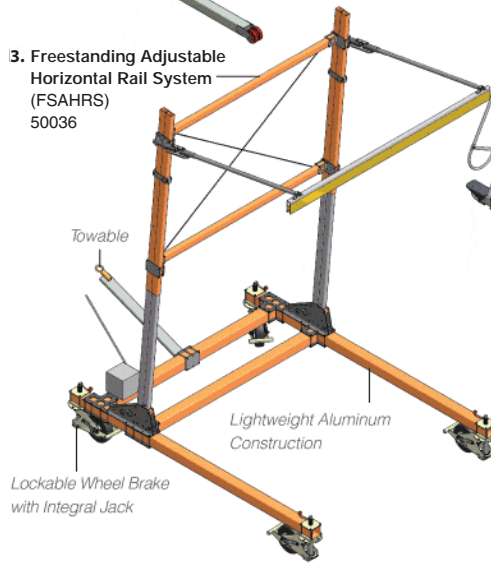
Versatility

These systems can be outfitted for any application or terrain

1. Freestanding Horizontal Rail System (FSHRS) 70032



3. Freestanding Adjustable Horizontal Rail System (FSAHRS) 50036



With six (6) wheel combinations to choose from, systems can be outfitted for any application or Terrain. Pneumatic wheels are foam filled for flat free durability.

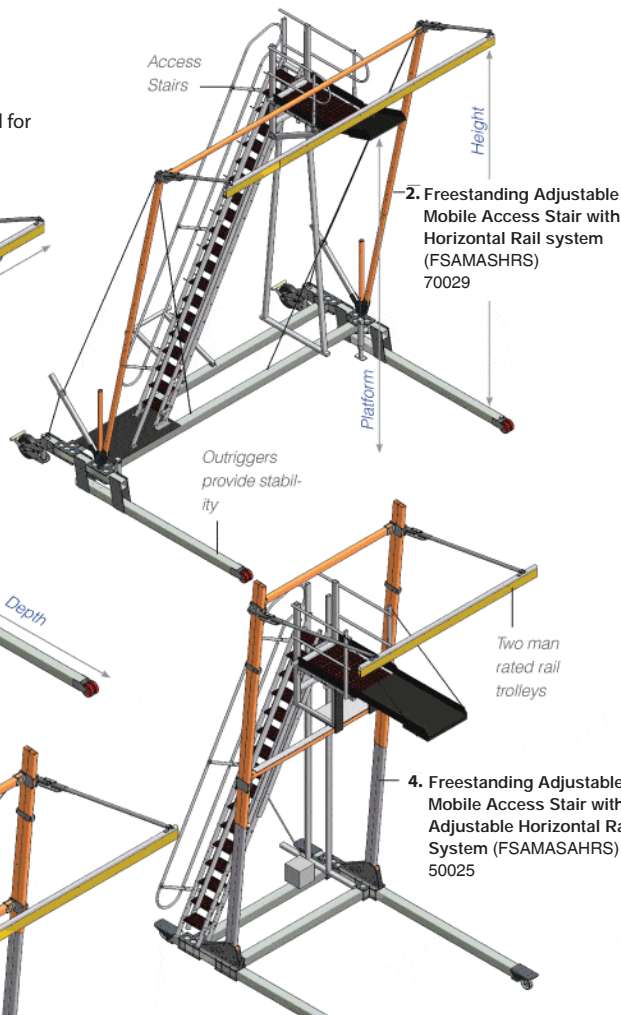
☐ 14. 5" Pneumatic Wheel, 360° Swivel, 90° Lockable, Wheel Brake with Integral Jack

☐ 14.5" Pneumatic Wheel, Fixed Position

☐ 8" Urethane Wheel, 360° Swivel,

☐ 8" Urethane Wheel Fixed Position

* Custom builds also available



2. Freestanding Adjustable Mobile Access Stair with Horizontal Rail system (FSAMASHRS) 70029

4. Freestanding Adjustable Mobile Access Stair with Adjustable Horizontal Rail System (FSAMASAHRS) 50025

1. Free-Standing Horizontal Rail system (FSHRS)

Part #	Depth (m)	Rail (m)	Height (m)	Platform (m)
70032	4.16	3.04	7.24	-
70040	4.87	11	7.72	-
50005	4.77	4.88	6.70	-

2. Free-Standing Adjustable Mobile Access Stair with Horizontal Rail System (FSAMASHRS)

Part #	Depth (m)	Rail (m)	Height (m)	Platform (m)
70029	5.33	6.09	7.39	2.59 - 5.86
50003	4.57	7.31	8.53	3.81 - 5.48
50004	4.57	4.87	6.09	2.43 - 3.65

3. Free-Standing Adjustable Horizontal Rail System (FSAHRS)

Part #	Depth (m)	Rail (m)	Height (m)	Platform (m)
50038	4.16	4.87	5.48	-
50036	4.52	3.65	5.46	-
50040	4.97	4.87	6.09 - 10.36	-

4. Free-Standing Adjustable Mobile Access Stair with Adjustable Horizontal Rail System (FSAMASAHRS)

Part #	Depth (m)	Rail (m)	Height (m)	Platform (m)
50025	5.00	3.65	5.79-7.11	2.94 - 4.47



FREE-STANDING SINGLE POINT ANCHOR (FSSPA)



The Free-Standing Single Point Anchor (FSSPA) System provides a portable overhead fall protection anchor point in a light-weight and easy to set up package. Free-Standing Single Point Anchor Systems feature pin-less adjustment (patent pending) which eliminates lost or damaged locking pins. These versatile fall protection systems are available in multiple configurations that mount onto trailers.



FREE-STANDING SINGLE POINT ANCHOR (FSSPA)

FEATURES

- Rugged Frame**
 Constructed from powder coated aluminium and zinc plated steel for corrosion resistance and maximum durability
- Full Stairs**
 Stair-step ladder design provides sure footing
- Lightweight**
 Easily moved by hand

Free-standing Single Point Anchor (FSSPA)

Free-standing Dual Point Anchor (FSDPA)

Available Heights

☐ 7.3m ☐ 6.7m ☐ 6.1m
☐ 5.5m ☐ 4.9m ☐ 3.8m
 #70031

Fixed Single Point Anchor (TDPA)

Available Heights

☐ 7.3m ☐ 6.7m ☐ 6.1m
☐ 5.5m ☐ 4.9m ☐ 3.8m
 #70019

Height

Depth

Outriggers provide stability

Lightweight Aluminum Construction

Towable Dual Point Anchors (TDPA)

Available Heights

☐ 7.3m ☐ 6.7m ☐ 6.1m
☐ 5.5m ☐ 4.9m
 #70022

Optional Outrigger Package required for 7.3m, 6.7m, & 6.1m Heights increases stability to allow for a longer working area at greater heights
 #50025

Towable Single Point Anchor (TDPA)

Available Heights

☐ 7.3m ☐ 6.7m ☐ 6.1m
☐ 5.5m ☐ 4.9m
 #70021

Optional Outrigger Package required for 7.3m, 6.7m, & 6.1m Heights increases stability to allow for a longer working area at greater heights
 #50025

Tow bar Package

Adjustable jacks for system leveling

Towable Trailer Mount Twin Point Anchor (TTMTA)

Available Heights

☐ 6.0m
 #70042



FREE-STANDING MOBILE ACCESS STAIR SYSTEM (FSMASS)



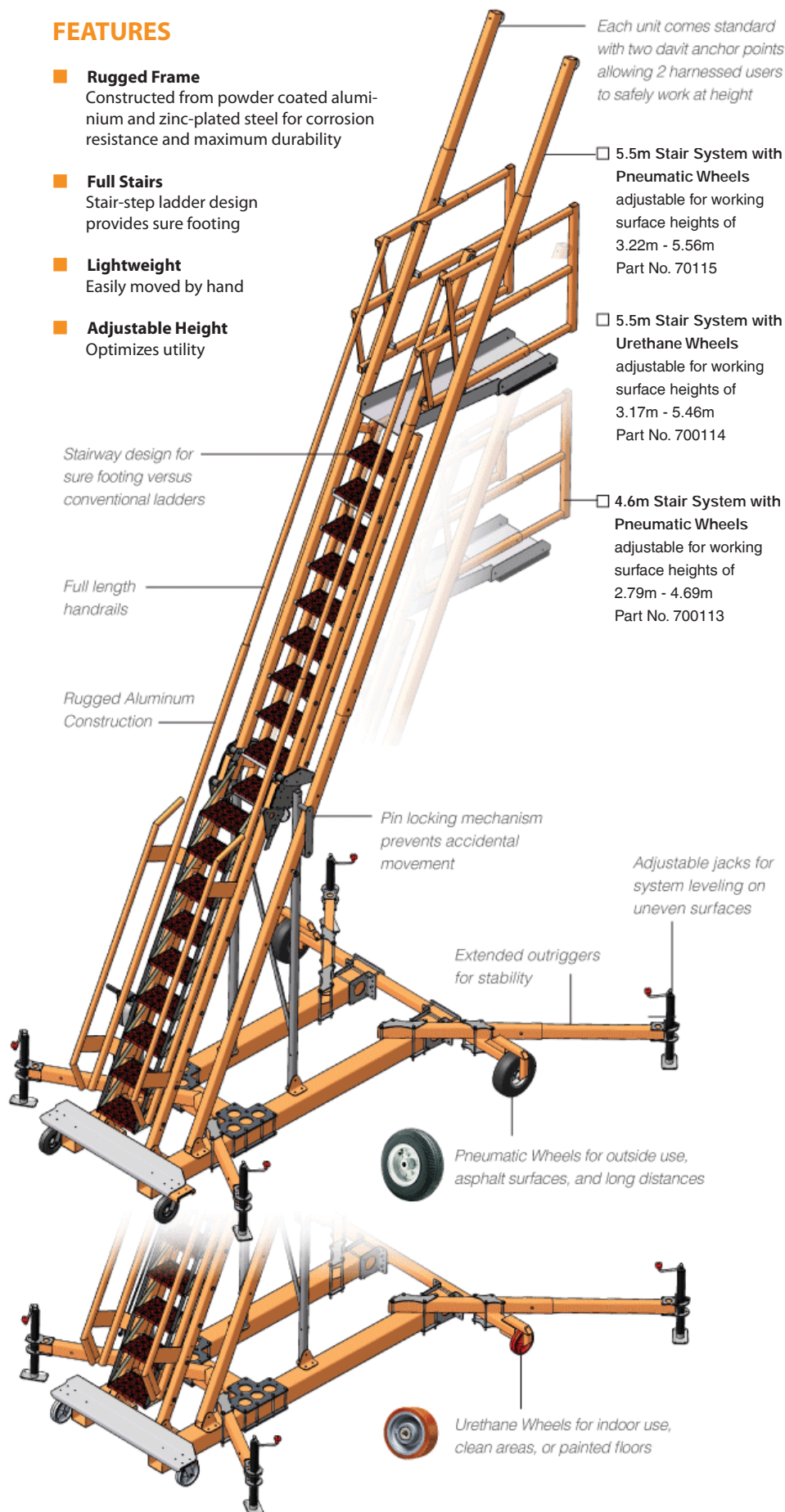
The Free-Standing Mobile Access Stair System (FSMASS) provides safe access for working surfaces up to 5.5m. The stair-step design provides safe access to and from work areas while carrying tools and each unit has two davit anchor points providing fall protection for two users. Adjustable outriggers enlarge the base footprint to stabilise and level the system when in use and collapse into the base to create a small and mobile package for transportation.



FREE-STANDING MOBILE ACCESS STAIR SYSTEM (FSMASS)

FEATURES

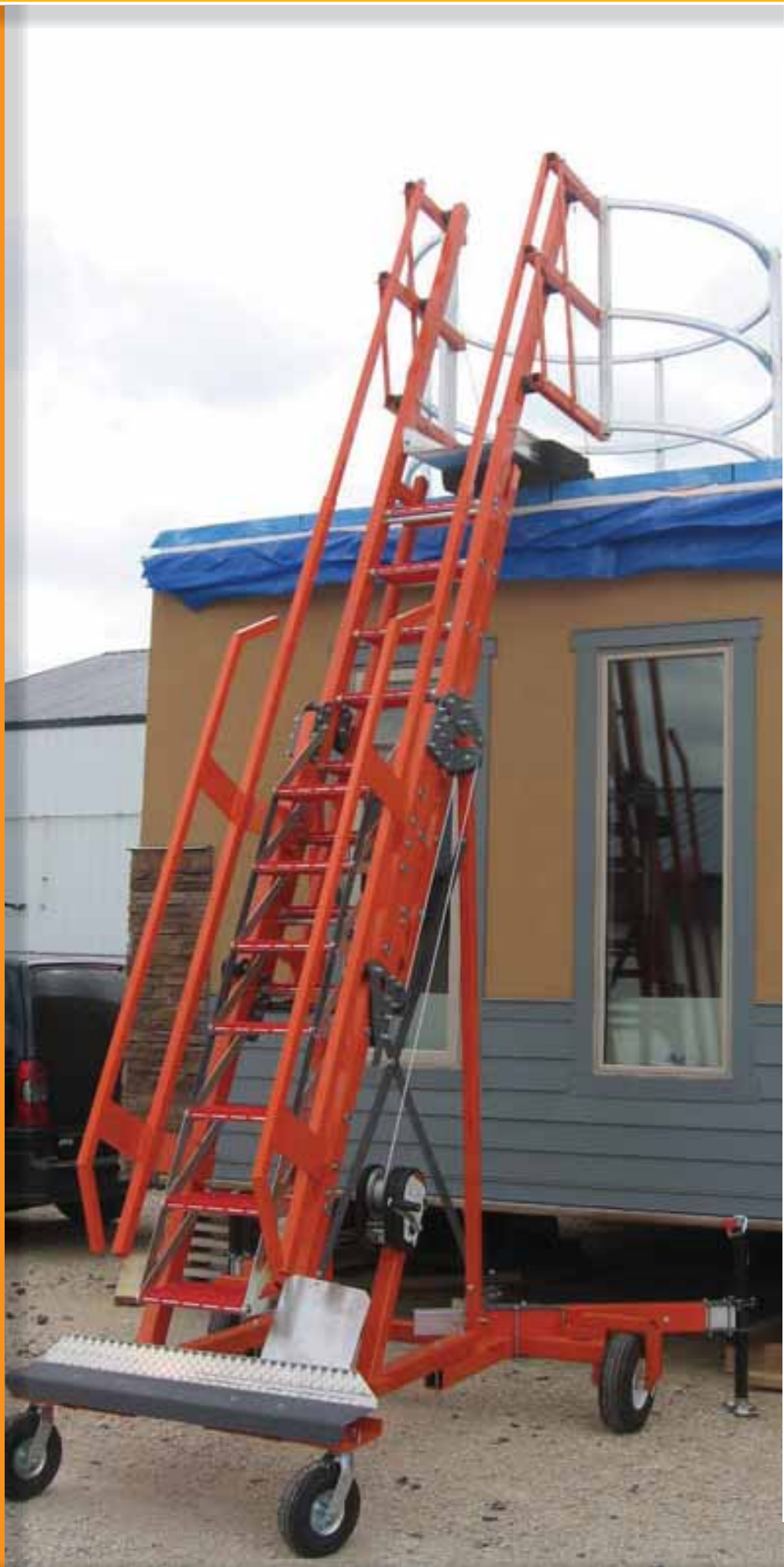
- **Rugged Frame**
Constructed from powder coated aluminium and zinc-plated steel for corrosion resistance and maximum durability
- **Full Stairs**
Stair-step ladder design provides sure footing
- **Lightweight**
Easily moved by hand
- **Adjustable Height**
Optimizes utility



MOBILE ACCESS STAIR SYSTEM (MASS)



The Mobile Access Stair System (MASS) provides a portable means of accessing elevated work areas with a full stairway versus a conventional ladder. The stair-step ladder design provides safe access to and from work areas while carrying tools. A wide variety of options including railing, cages and anchor structures provide ground-up fall protection for your elevated work activities. Depending on the options, the Mobile Access Stair System can provide safe access to elevated work surfaces from 1.77m to 4.72m.



MOBILE ACCESS STAIR SYSTEM (MASS)

FEATURES

■ Rugged Frame

Constructed from powder coated aluminium and zinc-plated steel for corrosion resistance and maximum durability

■ Full Stairs

Stair-step ladder design provides sure footing

■ Lightweight

Easily moved by hand

■ Adjustable Height

Optimizes utility

Adjustable working height of up to 4.57m

Full stairs provide sure footing versus conventional ladders

Pin locking mechanism prevents accidental movement

Full length ladder handrails

□ 4.6m MASS with Pneumatic Wheels
Adjustable for working surfaces from 1.77m to 3.04m

□ 3m MASS with Urethane Wheels
Adjustable for working surfaces from 1.77m to 3.04m

Extended outriggers for stability

□ Outrigger Base Package
Stabilizes and levels system with adjustable Outriggers

□ Pneumatic Wheels for outside use, asphalt surfaces, and long distances



□ Urethane Wheels for indoor use, clean areas, or painted floors



□ Davit Anchor Points
Provides two davit anchor points allowing harnessed users to safely work at height.



□ 1.8m Cage Package
Provides work area fall-restraint hand railing



□ 3m Horizontal Rail with Travelling Anchor Point
Provides a harnessed user hands-free fall protection to an extended work area



□ Tripod Package
With Confined Space Entry Winch that centres on cage for confined space entry or rescue





BEAVER TECHNOLOGY SERVICES

Phone: +61 2 8811 3500
Web: www.beavergrp.com.au
Email: sales@beavergrp.com.au

