

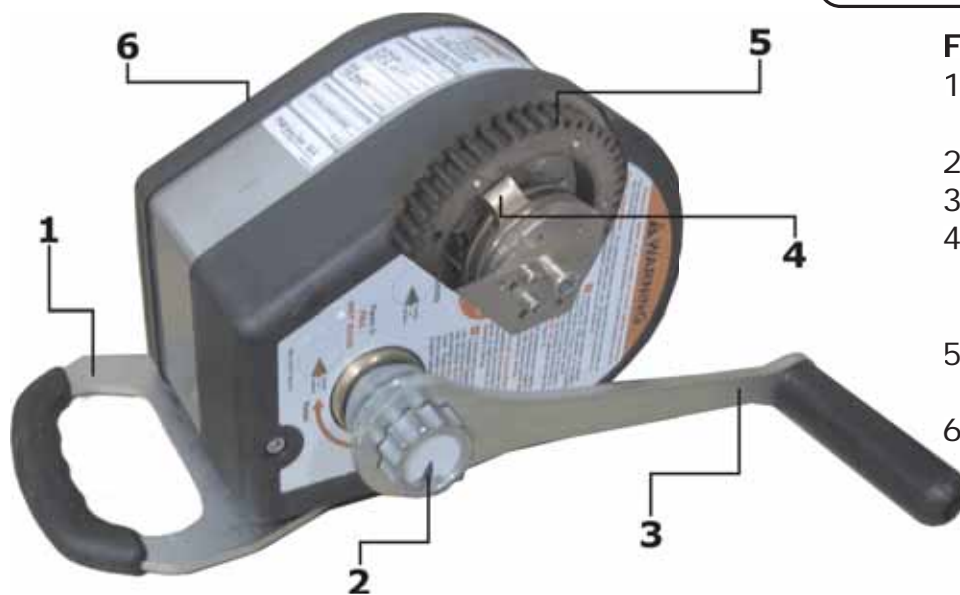
# bts<sup>®</sup> BEAVER TECHNOLOGY SERVICES

## WINCHES & WINCH ACCESSORIES



### Features

1. Ergonomic Carrying Handle
2. Brake Wear Indicator
3. Cranking Handle (Folding)
4. Secondary Brake (Meets ANSI Z359.4-2007 requirements)
5. Hardened Stainless Steel Drive Gears
6. High Impact Resistant Plastic Cover



This product complies with  
 CE 1496: 2006  
 ANSIZ117.1  
 ANSI/ASSEZ359.4  
 OSHA1910.146

### Best Hoist Pro-1 Series Winch



Part #	Cable Type	Weight
60002	18m Stainless Steelrope	14.0 kg
60004	30m Stainless Steelrope	15.2 kg
60003	18m Galvanised Steelrope	14.0 kg
60005	30m Galvanised Steelrope	15.2 kg

### Best Hoist Pro-2 Series Winch



Part #	Cable Type	Weight
60010	45m Stainless Steelrope	18.0 kg
60012	60m Stainless Steelrope	19.5 kg
60011	45m Galvanised Steelrope	18.0 kg
60013	60m Galvanised Steelrope	19.5 kg

### Best Hoist Pro-3 Series Winch

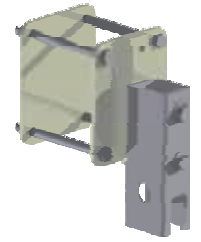


Part #	Cable Type	Weight
60018	76m Stainless Steelrope	22.3 kg
60020	90m Stainless Steelrope	23.8 kg
60019	76m Galvanised Steelrope	22.3 kg
60021	90m Galvanised Steelrope	23.8 kg

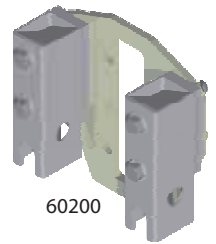
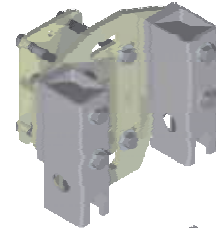
## Best Hoist Pro-1 Series Winch

Part #	Description
60101*	Bracket,Pro-1 Winch/SRL Structure #2(Back up plates w/Hardware)
60102*	Bracket,Pro-1 Winch/SRL Structure #3(Back up plates w/Hardware)
06139*	Bracket,Pro-1 Winch/SRL Structure #4(Back up plates w/Hardware)
60140*	Bracket,Pro-1 Winch/SRL Structure #5(Back up plates w/Hardware)
60141*	Bracket,Pro-1 Winch/SRL Structure #6(Back up plates w/Hardware)
60142*	Bracket,Pro-1 Winch/SRL Structure #7(Back up plates w/Hardware)
60200	Bracket,Pro-2/3 Winch Mtg Adapter
60201**	Hardware #3 Pkg, Pro-2/3 Winch (Hardware only)
60202**	Hardware #4 Pkg, Pro-2/3 Winch (Hardware only)
60203**	Hardware #5 Pkg, Pro-2/3 Winch (Hardware only)
60204**	Hardware #6 Pkg, Pro-2/3 Winch (Hardware only)
60205**	Hardware #7 Pkg, Pro-2/3 Winch (Hardware only)
60206***	Bracket, Pro-2/3 Winch Structure #3 (Back up Plates w/ Hardware)
60207***	Bracket, Pro-2/3 Winch Structure #4 (Back up Plates w/ Hardware)
60208***	Bracket, Pro-2/3 Winch Structure #5 (Back up Plates w/ Hardware)
60209***	Bracket, Pro-2/3 Winch Structure #6 (Back up Plates w/ Hardware)
60210***	Bracket, Pro-2/3 Winch Structure #7 (Back up Plates w/ Hardware)

Pro-1 Winch / SRL Bracket (typical)



Pro-2/3 Winch / SRL Bracket (typical)



60200

\* Use these brackets to mount Pro-1 winches to various structures.

\*\* Use these brackets to add a Pro-2/3 winch to a structure with an existing Pro-1 winch bracket.

\*\*\* Use these brackets to mount Pro-2/3 winches to various structures.

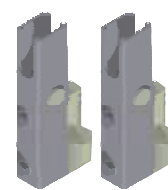
## Best Hoist Winch Mounting Brackets

Part#	Description
40000	Pro-1 Winch Mount Tuff-Klik
40005	Pro-2 & Pro-3 Winch Mount Tuff-Klik

60100



60159



Winch carrying handles are part of the winch assembly.

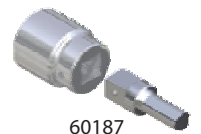
## Best Hoist Winch Power Drive Attachments

Part#	Description	Includes
60185	Pro Series Winch Crank Handle (Removable)	Handle and snap rings
60193	Direct Drive (Max input 300 rpm, No Clutch)	60186 w/ 60187
60194	Direct Drive (Max input 300 rpm, 310/620 lbs Clutch)	60126 w/ 60187
60195	Gear Reduction Drive 4:1 (Max Input 1200rpm, 310/620 lbs Clutch)	60126, 60110 w/ 60188
60196	Direct Drive (Max input 300 rpm, No Clutch)	60189w/60187
60197	Gear Reduction Drive 4:1 (Max Input 1200rpm, No Clutch)	60189, 60110 w/ 60188

60185

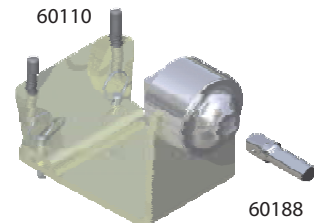


60186



60187

60110



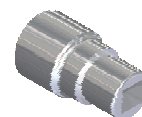
60188

## Winch Bags

Part#	Description
40000	Bag, Pro-1 Winch
40005	Bag, Pro-2 Winch
40006	Bag, Pro-3 Winch



60126



60189

Other styles and or custom designs are available. Please call for more information. Specifications are subject to change without notice.